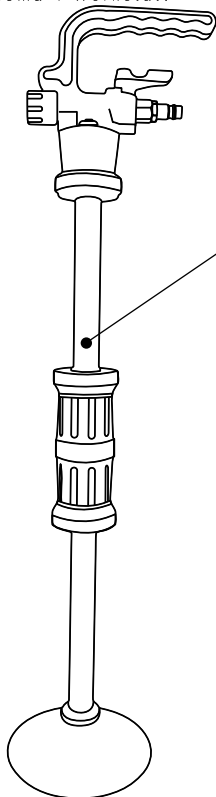


## OPERATION MANUAL

# T4W

Thoma 4 Werkstatt

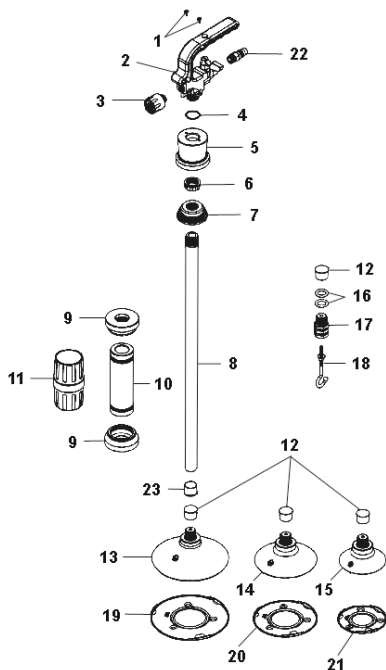


## Puller

Prod. no 59475

Parts list .....	3
Description .....	4
Work area .....	4
Personal safety .....	4
Connection schema. ....	6
Operation .....	6
Maintenance .....	7

## Parts list



- |    |                          |
|----|--------------------------|
| 1  | Handle screw             |
| 2  | Handle (c/w check valve) |
| 3  | Filter                   |
| 4  | O-ring                   |
| 5  | Handle support           |
| 6  | Screw cap                |
| 7  | Handle extension support |
| 8  | Handle extension         |
| 9  | Slide hammer support     |
| 10 | Slide hammer             |
| 11 | Slide hammer cover       |
| 12 | Cover                    |
| 13 | Suction pad 125mm        |
| 14 | Suction pad 100mm        |
| 15 | Suction pad 75mm         |
| 16 | O-ring                   |
| 17 | Hook support             |
| 18 | Hook                     |
| 19 | Suction pad cover 125mm  |
| 20 | Suction pad cover 100mm  |
| 21 | Suction pad cover 75mm   |
| 22 | Valve                    |
| 23 | Cover                    |

---

**WARNING!** Read and understand all instructions before using this product. The operator must follow basic precautions to reduce the risk of personal injury and / or damage to the product. Before allowing someone else to use this product, make sure they are aware of all safety information.

---

---

**WARNING!** The warnings, cautions and instructions discussed in this instruction manual cannot cover all possible conditions and situations that may occur. Common sense and caution are factors that cannot be built into this product, but must be supplied by the operator.

---



Keep this manual for the safety warnings, precautions and operating, inspection and maintenance instruction.

## Description

Air activated suction pad keeps firm hold of panel while slide hammer is used to ease out dents and depressions without damage to the paint surface. Ideal for initial panel reshaping. Supplied with Ø75mm, Ø100mm and Ø125mm suction pads and hook.

## Work area

- Operate in a safe work environment. Keep your work area clean and well lit.
- Do not use in the presence of flammable gases or liquids.
- Keep anyone not wearing the appropriate safety equipment away from the work area.



Minimize distractions in the work environment. Distractions can cause you to lose control of the tool.

- Store tools properly in a safe and dry location to prevent rust or damage.
- Always lock up tools and keep them out of the reach of children.

## Personal safety

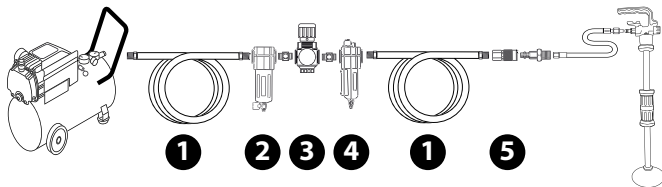
- Dress properly, wear protective equipment. Use breathing, ear, eye, face, foot, hand and head protection. Always wear ANSI approved impact safety goggles, which must provide both frontal and side

protection. Protect your hands with suitable gloves. Wear a full face shield if your work creates metal filings or wood chips. Protect your head from falling objects by wearing a hard hat. Wear an ANSI approved dust mask or respirator when working around metal, wood and chemical dusts and mists. Wear ANSI approved earplugs. Protective, electrically non-conductive clothes and non-skid footwear are recommended when working. Wear steel-toed boots to prevent injury from falling objects.

- Control the tool, personal movement and the work environment to avoid personal injury or damage to the tool. Stay alert, watch what you are doing and use your common sense.
- Keep articles of clothing, jewelry, hair, etc., away from moving parts to avoid entanglement with a tool.
- Do not operate any machine / tool when tired or under the influence of drugs, alcohol or medications.
- Do not overreach when operating a tool. Proper footing and balance enables better control of a tool in unexpected situations.
- Use clamps or other practical ways to support or secure the work piece to a stable platform. Holding the work piece by hand or against your body is not stable and may lead to loss of control and injury.



## Connection schema.



**1**

Air Hose

**2**

Filter

**3**

Regulator

**4**

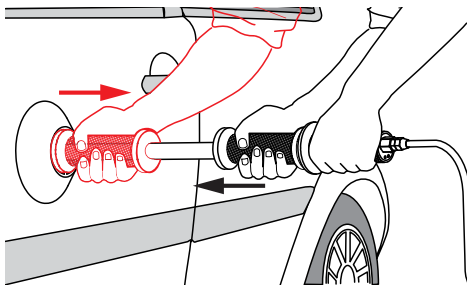
Lubricator  
(optional)

**5**

Cupler and  
Plug

## Operation

- Ensure that the panel to be worked on is dry, clean and free of grease.
- Select the appropriate size suction cup and screw it onto the slide hammer and remove the protective cover from the cup.
- Ensure the valve is in the 'Off' position (90° to handle). Connect the slide hammer to an air line with a suitable rated supply pressure - between 72psi and 116psi (working pressure is 90psi).
- Position the suction cup over the dent and press it gently onto the body panel.
- Open the air valve, the suction cup will form a vacuum, firmly attaching it to the body panel.
- Using the slide hammer, pull the dent out. Do not apply excessive force to the slide hammer.



- When finished, turn the air valve off and remove the puller from the body panel.
- Disconnect from the air supply, remove the suction cup from the puller and refit the protective cover. Place all parts back in the case and store it in a safe, dry, childproof location.
- Alternatively, weld a wavy wire strip to the panel, then use the hook in conjunction with the sliding hammer to pull out a dent.

## **Maintenance**

Check condition of the suction cups regularly, if damaged, replace them using genuine parts only.

Always keep the suction cups clean and free of oil and grease. Clean them regularly with a non-aggressive cleaner.

In order to preserve elasticity, do not expose suction cups to sunlight over an extended period of time.

Keep the tool in a clean, serviceable condition, using a slightly dampened cloth to clean it.



Thoma

Tel./Fax: +48 95 741 11 62  
info@t4w.eu • www.t4w.eu