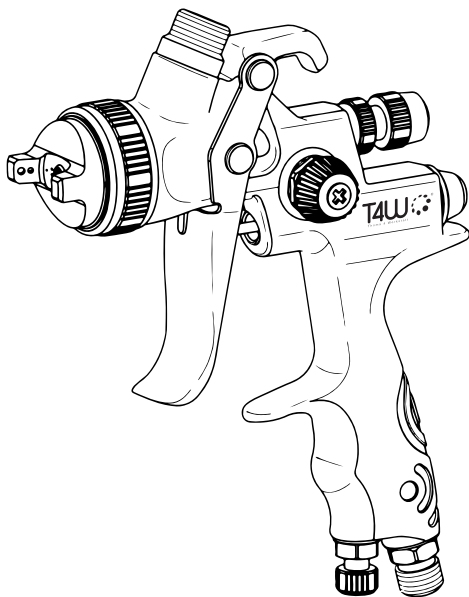


OPERATION MANUAL

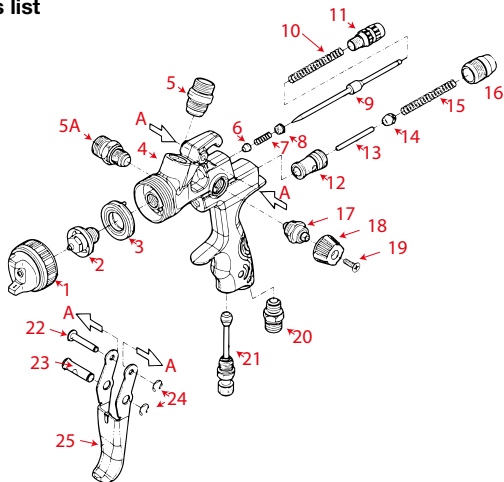
T4W ®
Thoma 4 Werkstatt



PIK♠XRP

Parts list	3
Cause	4
Repair	4
Trouble	4
Technical Data:	5
Safety	5
Instructions for use	6
Method of Application Material	7
Connection schema.	7
Cleaning a gun	7

Parts list



1 Air Cap Set	13 Air Valve Shaft
2 Fluid Nozzle	14 Air Valve Gasket
3 Distribute Seat	15 Spring
4 Gun Body	16 Screw
5 Fluid Inlet For 600c.c	17 Fan Control Assembly
5A Fluid Inlet For 400c.c	18 Control Knob
6 Needle Packing	19 Screw
7 Spring	20 Air Inlet
8 Needle Packing Seat	21 Air Control Set
9 Fluid Needle seat	22 Pin
10 Fluid Needle Spring	23 Hollow Pin
11 Control Knob Set	24 E-Stopper
12 Air Valve Seat	25 Trigger

Please read the operating instructions carefully before using the device, and keep them in a safe place.

Cause

- Foreign substances between fluid nozzle and fluid needle prevent sealing.
- Self tensioning needle sealing damaged or lost.
- Horn air holes or air circuit clogged.
- Dirt on fluid needle tip or air outlet.
- Too little material in cup, fluid nozzle not tight, needle sealing damaged, nozzle set dirty or damaged.
- Atomization air flows through the paint channel to the cup.

The paint nozzle is not tight enough. Air nozzle is not completely screwed, the air net clogged and the seat is defective or nozzle insert is damaged.

Repair

- Clean fluid needle and fluid nozzle in thinner or use new fluid nozzle.
- Replace needle sealing.
- Soak in thinner, afterwards clean with nozzle-cleaning needle.
- Turn air nozzle by 180 degrees. If defective pattern remains, clean paint outlet in air nozzle.
- Refill material, tighten parts, if necessary clean or replace.
- Tighten parts accordingly, clean or replace.

Trouble

- Gun leaks from fluid nozzle.
- Paint emerges from fluid needle-needle sealing.
- Spray pattern in sickle shape.
- Drop-like or oval shaped pattern.
- Paint spray flutters.
- Material hobbies or “boils” in paint cup.

Technical Data:

Available nozzle	1.3mm:	No.59474
	1.4mm:	No.59528
	1.5mm:	No.59529
	1.7mm:	No.59530
	2.1mm:	No.59531
	2.5mm:	No.59532
Pressure required	1-2 bar (10-28 psi)	
Air Consumption	150~280 l/min	
Air connection	1/4" PS(M)	
Net weight	450g	

Safety

Never point the tool against people and animals - coating materials or compressed air may be the cause of injuries. It is forbidden to use any other gas instead of compressed air.

- The use of other gases can lead to serious injury, or threaten to cause a fire hazard.
- When connecting the tool to the compressed air system should take into account the space needed for the hose to prevent damage to the hose or fittings.
- At work should be ensured adequate ventilation. Lack of ventilation can cause damage to health, or threaten to cause a fire hazard.
- The tool should be used away from sources of heat and fire, as this could cause damage to or deterioration of functioning.
- Observe general safety rules when performing work of coating materials and used appropriately selected personal protective equipment such as goggles, masks, gloves and overalls.
- Never leave the assembled air system without the supervision of the person entitled to maintenance. Do not allow children near the assembled air system.
- Supply compressed air under high pressure, can cause kickback tool in a direction opposite to the direction of ejection of the coating material. It should be especially careful, because the recoil forces may, in certain circumstances, result in multiple injuries.
- It is recommended to try the tool before you start. It is recommended that utility workers are properly trained. This will improve safety significantly.
- Follow manufacturer of coating materials and use them in

accordance with the stated principles of personal protective equipment, fire and environmental protection. Failure to follow manufacturer's coating materials, can lead to serious injury.

- To determine compatibility with the applicable coating materials, a list of materials used in the construction of the tool will be available on request.
- When working with compressed air throughout the system collects energy. Use caution when working and rest periods to avoid the danger that may result from the stored energy of compressed air.
- Always use an electrostatic discharge hoses.
- Never block the outlet nozzle holes with your fingers.
- Do not modify the equipment on their own. Find out whether all the parts are in working order, and replace if worn only new and original.
- In the event of an accident disconnect the unit from the power source. Follow the general principles of health and safety in the workplace.

Never direct the coating material to a heat source or fire, it could cause a fire.



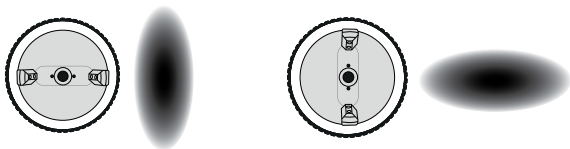
Instructions for use

Flow control.

The stream can also be adjusted using the air cap die.

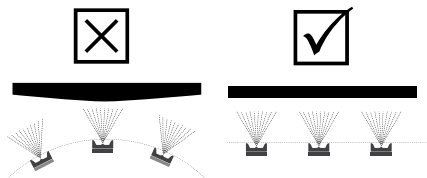
A) You gain by turning the air cap so that the ends are on the sides of the gun.

B) You gain by turning the air cap so that the ends are aligned with the trigger.



* Check the documentation that provides the producer jets to impose gun.

Method of Application Material



Connection schema.



Cleaning a gun

Never use a metal brush for cleaning gun. Never clean the whole gun dipping in a solvent.

- Remove the gun from the power supply.
- Empty the paint and remove it.
- Manually remove the air cap.
- Manually remove the paint adjustment (5)
- Remove the spring (13)

- Pull the trigger
- Hand gently pull the needle (16)
- The key attached to the gun unscrew the nozzle (2)
- Put the nozzle needle and air cap to the solvent (2,16,1)
- Use the included brush, wash them gently.
- Use a brush to clean the inside of the solvent gun
- Use the cloth with clean solvent tank and gun body.
- Assemble everything back



Thoma

Tel./Fax: +48 95 741 11 62
info@t4w.eu • www.t4w.eu